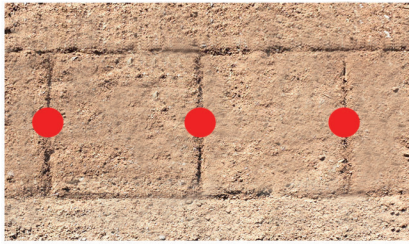
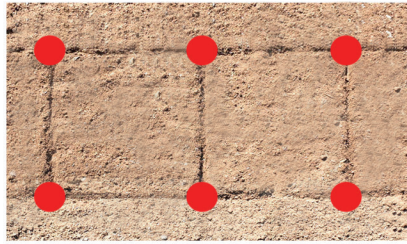


GRIDDER PLANTING CHART: *NEVERSINK FARM*



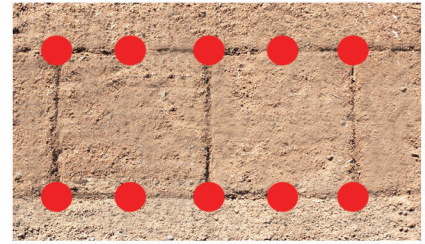
**1X2**

cucumber, squash,  
zucchini, tomato



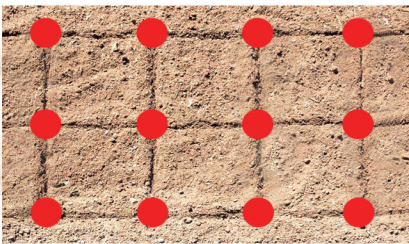
**2X2**

kale, chard, big celery



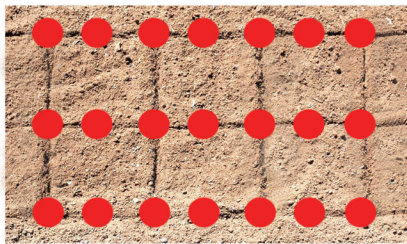
**2X3**

chard, big scallion



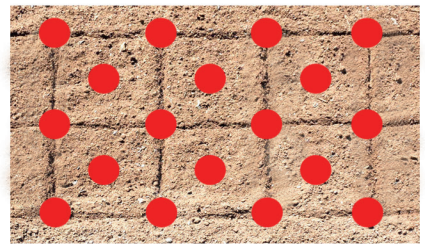
**3X3**

lettuce heads, celery,  
basil, dandelion greens



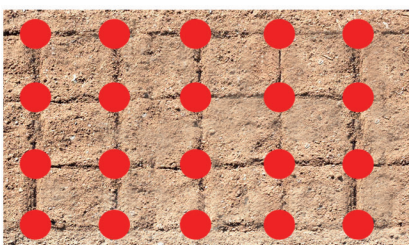
**3X5**

beets, parsley, leeks,  
cilantro, onions



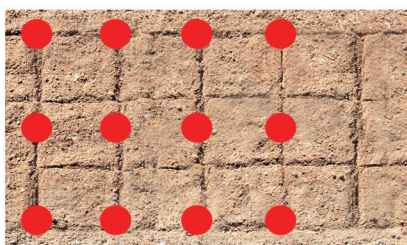
**3X3 offset**

thyme, spinach, tatsoi,  
tight winter plantings



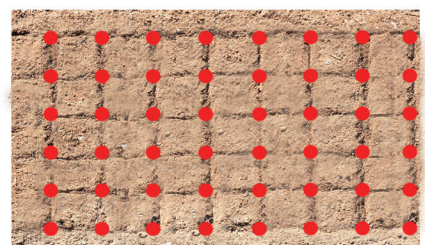
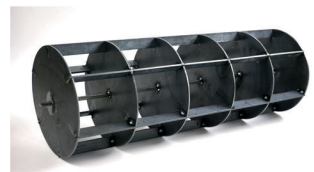
**4X4**

salanova lettuce mix,  
beets, raddichio, garlic



**3X4**

lettuce heads, beets,  
onions



**6X6**

spinach, baby greens,  
layout for paperpot

Distributed by: